

Installing & Using Aspera Enterprise Server with Vantage

This App Note
applies to
Vantage
version 6.3 with UP2
or later

Synopsis	2
Requirements.....	2
Vantage Server Requirements.....	2
Aspera Server Requirements	3
Licensing.....	3
Installing Aspera Enterprise Server integration with Vantage	3
Features.....	4
Example Aspera Workflow.....	4
Configuring Actions to Use Aspera.....	5
Configuring the Address Book for Aspera	7
More Information about Aspera Server.....	9
Sales and Support Contacts	9
Telestream Support Contacts.....	9
Copyright and Trademark Notice	9

Synopsis

The Aspera Enterprise Server transfers files, directories and large data sets at very high speeds over the WAN with sophisticated user management and security capabilities for enterprise applications. Built on patented FASPTM technology, the Aspera Enterprise Server offers flexible options, enabling access to instantly scalable, on-demand storage and computing capacity.

Telestream has tightly integrated an interface to the Aspera Enterprise Server technology directly into Vantage to enable automated high-speed transfer of files processed into and out of any Vantage workflow, including media and metadata files. This integration allows Vantage to interactively browse, upload, and download media content with any Aspera server endpoint, whether that be a fully featured Enterprise Server system or a Point-to-Point node.

The modular nature of Vantage makes it easy for users to create workflows that incorporate Aspera ingest and delivery. Direct product integration ensures a seamless user experience in workflow creation, and full support for all of the Aspera high-speed transfer platform features, including support for all client applications, encryption over the wire and at rest, adaptive rate control, management and notification, and support for all types of storage options on premises and in the cloud.

Vantage already interfaced with Aspera *aspex* via an optional Vantage Aspera *aspex* service connector (Vantage Aspera service) and associated Vantage Aspera workflow action (http://www.telestream.net/pdfs/app-notes/app_Vantage_Aspira.pdf). Now Vantage includes Aspera Enterprise Server file folder access within these Vantage workflow actions and functions:

- Watch
- Associate
- Copy/Move (Address Book)
- Deploy
- Manual Submit

Using the Vantage Aspera connectivity within your Vantage workflows will enable the automated ingest and delivery of media and associated files directly to Aspera end points anywhere in the world.

Requirements

The Vantage Aspera Enterprise integration can be added to Vantage 6.3 with Update Pack 2. If you do not currently have Vantage 6.3 with UP2 or later, download it from Telestream and obtain a license that includes the Vantage Aspera service.

Note: This Vantage Aspera Enterprise installer patch is *not* compatible with Vantage 6.3 with Update Pack 1 or earlier.

Vantage Server Requirements

- Vantage 6.3 with Update Pack 2 or later
- Vantage Aspera Enterprise Server Setup installer v6.3.433.52 or later
- Valid Vantage license that includes the Vantage Aspera connector license (V-ASPERSW).

Aspera Server Requirements

Vantage support for Aspera Enterprise Server file system access requires:

- Remote servers must be running Aspera Enterprise Server or Point-to-Point v3.5.2 or later.
- Aspera recommends setting SSH MaxSessions to 100 on Aspera Enterprise Server.
- Access to an Aspera Enterprise Server file system folder or Point-to-Point end point requires a valid User Account with the appropriate Read/Write permissions. Consult with your Aspera Enterprise Server administrator for details.

Licensing

- To enable access to an Aspera Enterprise Server's file system within Vantage, you must obtain the V-ASPERSW license option from Telestream. Vantage does not restrict the number of simultaneous connections to Aspera Enterprise Servers. Consult with your Aspera Enterprise Server administrator regarding restrictions on the Aspera Server side.

Installing Aspera Enterprise Server integration with Vantage

This option should be considered by any Vantage customer who requires access a remote Aspera Enterprise Server from within Vantage workflows.

Note: Telestream does not resell Aspera software. Telestream supplies an integration option allowing direct access to an Aspera Enterprise Server's file systems. The Aspera software and instructions for installing it can be obtained from Aspera or an authorized Aspera reseller/dealer.

This feature is installed by running the Vantage Aspera Setup installer executable on Vantage 6.3 with UP2 or later servers and on client systems running the Vantage Workflow Designer, Vantage Management Console or other Vantage Client application requiring connection to the Aspera Server. It can be installed on standalone Vantage systems or on each server in a Vantage array (database-only servers excluded).

Follow these steps to install the Vantage Aspera Enterprise Server integration on your Vantage system.

1. If you do not currently have Vantage 6.3 with UP2 or later, download the software from www.telestream.net and obtain a license from Telestream that includes the Vantage Aspera software option (V-ASPERSW).
2. If you already have Vantage 6.3 with UP2 or later, obtain a license from Telestream that includes the Vantage Aspera software option (V-ASPERSW).
3. Install Vantage (or Vantage client applications) on all appropriate systems.
4. Run the Vantage 6.3 Aspera Setup installer on all Vantage servers and Vantage client systems.

NOTE: the Aspera patch is also required on client-only machines which need to configure any Aspera filesystem locations.

5. Apply the V-ASPERSW license using the Vantage Management Console.

Features

- With the Aspera Enterprise Server file system enabled in Vantage, Vantage will connect directly to the Aspera Enterprise Server.
- The Vantage integration with the Aspera Enterprise Server allows you to access files and folders on the Aspera Enterprise Server as you would do with any typical file system. The configuration, management and functionality of Aspera Enterprise Server outside of the file system connection are not part of the Vantage integration.

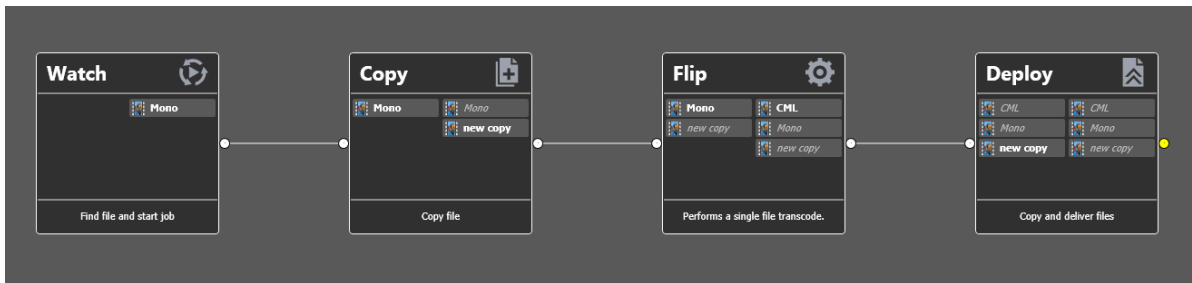
Example Aspera Workflow

The following workflow example (Figure 1) shows how to ingest and deploy multiple files using Aspera Enterprise Server.

Note: Some Vantage processes, such as transcoders, require that files be accessible locally, or through a UNC path, before they can be consumed. In the case of pulling files from an Aspera Enterprise Server, this would require a Copy or Move action prior to such workflow actions.

In the following workflow a Copy action is used to create a locally accessible file for the Flip action to consume. The portion of the workflow after the Watch -> Copy and prior to Deploy can include any other actions or functions, such as an Analyze or a Flip transcode. The Deploy action delivers the workflow output to the Aspera Enterprise Server. Other actions that intake files from or output files to an Aspera Enterprise Server file system include Associate, Copy, Move, and Manual Submit. Configuration of the action Inspector for this workflow is described on the following pages.

Figure 1. Example Aspera Multiple Deploy Workflow.

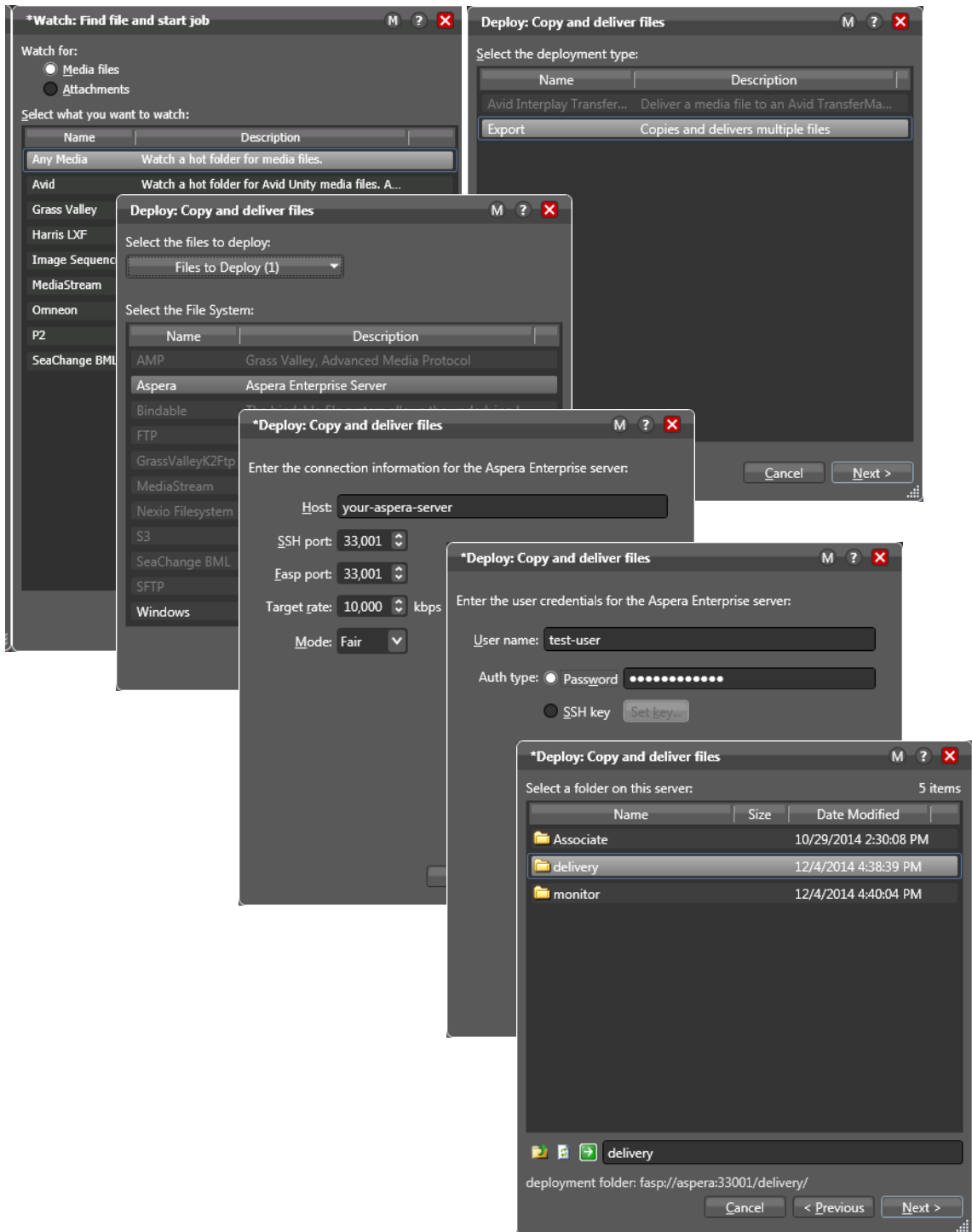


Configuring Actions to Use Aspera

Follow these steps to configure an action to use the Aspera Enterprise Server file system:

1. Create a workflow.
2. Click and drag the action into the workflow.
3. Click the “i” in the upper left corner of the action to open the Inspector.

Figure 2. Example Watch and Deploy Action Inspector Settings for Aspera Enterprise Server.



4. Select *Any Media* (Watch action) or *Export* (Deploy action), and click *Next*.
5. Select *Aspera Enterprise Server* as the media source or destination, and click *Next*.
6. Specify other details, such as the path to the input or destination folder, file nickname, etc.
7. Enter the host name and connection information for the Aspera Enterprise Server so Vantage can connect to it. Connection details include selecting the SSH and Fasp ports, the Target Rate maximum file transfer rate, and the transfer mode (Fair, Fixed, High, or Low).

Note: The Fixed selection can overload a network link in some circumstances, so use it judiciously. The other selections set the general priority of the transfer but allow the transfer speed to vary according to network demands.

8. Enter a valid account user name and password to allow Vantage to log into the Aspera Enterprise Server. This account should have been set up on the Aspera Enterprise server using the Aspera software before attempting to access the server from Vantage.

All connections to the Aspera server are authenticated to a user account via SSH, either by password, or public-key model. If you would like to secure the connection using the public-key model, select SSH key and use Set key to enter the private key. Keys must be in OpenSSH format. Add a private SSH key to authenticate from Vantage. The server must be pre-configured with the matching public key.

The key generation process will ask for an optional passphrase. If you choose a passphrase, the key will be encrypted using the passphrase as the encryption key. The passphrase is necessary any time the private key will be used. This is to protect the private key in case it becomes compromised. Consult your Aspera Enterprise Server administrator for SSH key details.

Vantage will connect to the Aspera Enterprise Server using the server address and account credentials you provided. If the connection attempt to the server is not successful, a dialog will indicate an unsuccessful connection. Verify and re-enter the correct server address and login credentials.

9. Select the folder on the server that you want to watch or where you want the files delivered, and click *Next*. Then click *Finish* to complete and save the Deploy or Watch action configuration.
10. Activate the workflow, and submit a file to test for successful workflow operation.

When the workflow runs, it delivers its output to the repository specified by your Deploy action configuration.

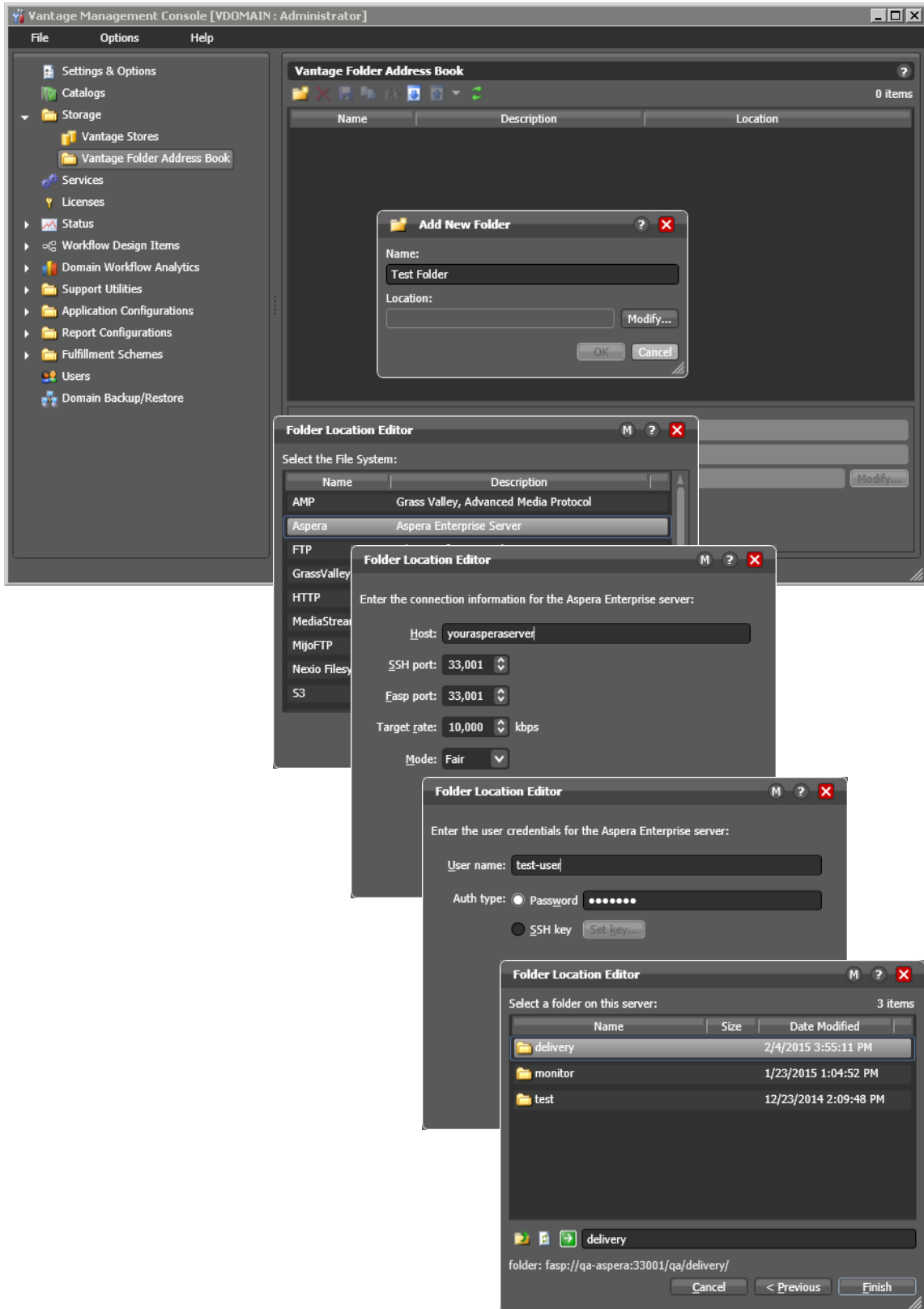
Configuring the Address Book for Aspera

To make it quick and easy to use the Aspera Enterprise Server connection repeatedly without entering connection information each time, you may want to add a folder on the Aspera Server as an address to remember in the Vantage Folder Address Book.

To add an Aspera Enterprise Server folder to the Address Book, follow these steps and refer to the screen captures shown in Figure 3.

1. Open the Vantage Management Console.
2. Click Storage > Address Book.
3. Click Add Folder.
4. Select Aspera Enterprise Server from the file system list.
5. Enter the host name and connection information for the Aspera Enterprise Server so Vantage can connect to it.
6. Enter a valid account user name and password or SSH key to allow Vantage to log into the Aspera Enterprise Server.
7. Select the folder on the server that you want to access and click Finish.

Figure 3. Configuring the Address Book for Aspera Enterprise Server.



More Information about Aspera Server

For more information about Vantage and Aspera Enterprise Server, visit the following Telestream web page: <http://www.telestream.net/telestream-support/vantage/support.htm>

Sales and Support Contacts

Aspera Enterprise Server software can be obtained from Aspera or an authorized Aspera reseller/dealer.

- **Sales contact:** Web - <http://asperasoft.com/contact-us/>, Email - sales@asperasoft.com
- **Support:** Web - <https://support.asperasoft.com/home>, Email - support@asperasoft.com

Vantage Aspera Installation, licensing and user documentation can be obtained here:

- http://www.telestream.net/pdfs/app-notes/app_Vantage_Aspira.pdf

Telestream Support Contacts

- **Web Site:** <http://www.telestream.net/telestream-support/vantage/support.htm>
- **Support Email:** support@telestream.net

Terms and times of support services vary, per the terms of your current service contract with Telestream.

Copyright and Trademark Notice

© 2015 Telestream®, LLC. All rights reserved. No part of this publication may be reproduced, transmitted, transcribed, altered, or translated into any languages without written permission of Telestream, Inc. Information and specifications in this document are subject to change without notice and do not represent a commitment on the part of Telestream.

Telestream, CaptionMaker, Episode, Flip4Mac, FlipFactory, Flip Player, Lightspeed, ScreenFlow, Switch, Vantage, Wirecast, GraphicsFactory, MetaFlip, and Split-and-Stitch are registered trademarks and Pipeline, MacCaption, e-Captioning, and Switch are trademarks of Telestream, LLC. All other trademarks are the property of their respective owners.